



Greetings,



Summer in Maine is always a special time for our family. Everyone gathers together at our family cottage to laugh, share stories, eat great food and make new memories that last forever. We hope you have the chance to relax and enjoy the company of those close to you during the upcoming lazy, hazy days of summer.

One of the best parts of my job is meeting new people. It's always interesting to find out about their work, their home or barn plans and occasionally I learn about their volunteer work. We had the pleasure of working with a delightful and dedicated couple over the past two years building an indoor riding arena to support their growing horse rescue program.

The project involved the expertise and talent of many professionals and subcontractors - too numerous to mention here. We are thankful for their contributions and enjoyed the process with them. While we are proud of our company's role in the newly designed and constructed arena, it is overshadowed by the valuable work the owners and their staff do at their farm each day. It has been inspiring to see some of what they accomplish with rescued animals and how the new facility will make their tireless work more efficient.

Read more about the project below and visit their Facebook page to learn more about the

Horses with Hope Organization.

PROJECT SPOTLIGHT

Broadview Farm



The [Horses with Hope](#) Organization, located in mid-coast Maine, takes in some of the worst cases of animal abuse and neglect. Working with the horses on a daily basis is a critical part of the process, and with Maine's harsh winters and rainy springs, this had been a challenge. The owners and founders of this organization worked closely with [Houses & Barns by John Libby](#) to design and construct a 24,000 square-foot indoor training center that has made year-round rehabilitation possible.



Many special design features were incorporated with the horses in mind including: fifteen massive **glulam beams** with no support beams to get in the way; extra-large windows and **three cupolas** that let in lots of sunlight; polymer-fused, **wax-coated sand** within the arena that cuts down on dust and odor and provides a much

healthier environment for the horses; a "**Nana Wall**" folding window which can be completely opened to allow the viewing area to be part of the arena. The roof and walls are enclosed with **SIPs panels**, creating insulation which keeps the inside arena surprisingly warm, even during the Maine winters, without any supplemental heat sources.

We are ready to work with you!

Whether you are an architect designing a home with for your client, or a homeowner considering a new project, [Houses & Barns by John Libby](#) has the team to make your dream a reality. We are a full service general contractor with 40+ years of experience you can count on. Please give us a call or visit us on the web before beginning your

next construction project. We are **Quality People** doing **Quality Work**.

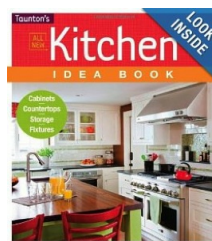
Pre-Cut Special Maquoit Frame



We have a weathered display frame for sale at our Freeport shop.

The Maquoit (24' x 28') eastern white pine timber frame is fabricated with a full set of loft joists and awaits a new home later this fall. It is offered at \$23,850 which includes transportation and raising onto your deck or slab within 50 miles of Freeport. Give us a call if you are interested in making this frame your dream barn!

Taunton's Kitchen Idea Book



One of our kitchen designs is included in Taunton's recently published "Kitchen Idea Book"

by Joanne Kellar Bouknight. Look for it on page 135.

If you would like to order a copy of this inspiring idea book please click on the link:

[ISBN# 978-1-60085-715-7](#)

Signature Timber Frame Series

Our timber framing shop has been steady this year fabricating eastern white pine timber frames from our **Signature Series**. The **Harraseeket**, our smallest frame at 16' x 20', has been popular this year. Its size provides versatility for a variety of purposes ranging from a one car garage, to a storage shed, to a screened-in outdoor kitchen. We raised a **Pettengill** in Connecticut and have one planned for the fall on Baileys Island. Our **Winslow** (26' x 36') is on the design board as a summer beach home and interest in the **Maquoit** frame (24' x 28') as a guest house continues to grow.



Look for our ads in these publications:



tsil gill m ronic



Contact us at:

Houses & Barns by John Libby
PO Box 258
Freeport, Maine 04032
207-865-4169
info@housesandbarns.com
www.housesandbarns.com

Tell us about your project!

Please click the
Project Questionnaire button below.

